



 zephyr[®]

Compressor catalogue

 zephyr



Who are we?

Zephyr is a traditional Swiss manufacturer of air compressors and their accessories for all industries, from heavy industry to the food and pharmaceutical industries. The production and development of Zephyr's compressor technology is realised across several continents in a production area of more than 80,000 square metres, including the most demanding production of its own screw elements.

In the area of oil-free compressors, cooperation with GHH, the largest German manufacturer of oil-free screw blocks, had already begun at the beginning of production. These compressors are used for technologies designed for applications requiring 100 % oil-free air, and they meet the strictest ISO Class 0 standard. Similarly, close cooperation with a Japanese manufacturer of spiral oil-free blocks, which the world's largest manufacturers of compressor technology use for their products, began in 2015.

In the actual development and subsequent production of our products, we place the main emphasis on creating products of a high quality, on low service costs, and on products with energy efficient operation so as to minimise the impact on the environment and the overall carbon footprint. We have, therefore, been specialised in the development of high-efficiency EPM screw elements with an output that is up to 15 % higher compared to standard screw compressors, systems for heat recovery in the production of compressed air, and drives with permanent magnet synchronous motors with an efficiency of up to 97 % in the entire control range. ISO, CE, TÜV, GC, and other certificates are a matter of course.

To meet all the needs of our customers, we have a worldwide network of distributors and service organisations, as well as above-standard warranty periods for all our products.



Zephyr EPM compressors

EPM-series Zephyr compressors maximize the potential of variable speed technology. With this technology, they achieve up to a 15% higher output with excellent specific power consumption – the energy savings are up to 40% compared to standard screw compressors. For the individual types of EPM-series compressors, spirals with a unique profile, precisely machined rotors and tapered roller bearings of the highest quality have been specially designed to ensure their high service life as well as the maximum possible supply of compressed air.



Advantages of Zephyr EPM compressors

- *The most effective spiral with a special profile and an output up to 15% higher*
- *High-efficiency, maintenance-free synchronous permanent magnet motors that do not have any bearings*
- *Direct drive - the motor is mounted directly on the shaft of the spiral*
- *Unlimited number of starts/stops*
- *Shutdown instead of running idle to save energy; the compressor does not have an unloaded state*
- *High-efficiency frequency converters with the latest Vector control technology*
- *Smooth, soft start; the starting current is always lower than during full load*
- *Dimensioned for continuous 24/7 operation*
- *Stable constant pressure*
- *The automatic coolant temperature control prevents the accumulation of water condensate*
- *Coolers enlarged by 30%*
- *Latest generation of microprocessor control with remote access capability*

Model	Power consumption kW	Capacity m ³ /min	Pressure bar g	Dimensions mm (LxWxH)	Weight kg	Pipe connection
ZS-15 EPM- 7	15	0,75-3	7	1200x800x1100	460	R 1
ZS-15 EPM- 8		0,73-2,9	8			
ZS-15 EPM- 10		0,58-2,3	10			
ZS-18,5 EPM- 7	18,5	0,96-3,7	7	1200x800x1100	480	R 1
ZS-18,5 EPM- 8		0,93-3,5	8			
ZS-18,5 EPM- 10		0,73-2,9	10			
ZS-22 EPM- 7	22	1,06-4,3	7	1200x800x1100	560	R 1
ZS-22 EPM- 8		1,05-4,2	8			
ZS-22 EPM- 10		0,9-3,6	10			
ZS-30 EPM- 7	30	1,71-6,5	7	1300x950x1370	830	R 1 1/2
ZS-30 EPM- 8		1,68-6,4	8			
ZS-30 EPM- 10		1,3-5,2	10			
ZS-37 EPM- 7	37	1,88-7,5	7	1300x950x1370	850	R 1 1/2
ZS-37 EPM- 8		1,85-7,4	8			
ZS-37 EPM- 10		1,58-6,3	10			
ZS-45 EPM- 7	45	2,35-9,4	7	1300x1030x1520	890	R 1 1/2
ZS-45 EPM- 8		2,33-9,3	8			
ZS-45 EPM- 10		2,0-8,0	10			
ZS-55 EPM- 7	55	3,38-12,5	7	2150x1350x1500	1960	RC 2
ZS-55 EPM- 8		3,19-11,8	8			
ZS-55 EPM- 10		2,63-10,5	10			
ZS-63 EPM- 7	63	3,58-14,3	7	2300x1350x1500	2150	RC 2
ZS-63 EPM- 8		3,38-13,5	8			
ZS-63 EPM- 10		3,01-12,3	10			
ZS-75 EPM- 7	75	4,38-17,5	7	2900x1620x1692	2800	DN65
ZS-75 EPM- 8		4,29-16,3	8			
ZS-75 EPM- 10		3,89-14,7	10			
ZS-90 EPM- 7	90	5,45-20,6	7	2900x1620x1692	2850	DN65
ZS-90 EPM- 8		4,9-19,6	8			
ZS-90 EPM- 10		4,72-17,1	10			
ZS-110 EPM- 7	110	6,7-25,6	7	2800x1750x1692	3050	DN65
ZS-110 EPM- 8		6,0-24,0	8			
ZS-110 EPM- 10		5,35-21,4	10			

Zephyr PM compressors

The PM-series Zephyr compressor technology allows for the precise adjustment of the required amount of compressed air. In combination with high-efficiency permanent magnet synchronous motors, PM-series compressors achieve a constant efficiency of up to 97% over the entire control range. The energy savings are up to 40% compared to standard screw compressors.



Advantages of Zephyr PM compressors

- High-efficiency, maintenance-free synchronous permanent magnet motors that do not have any bearings
- Direct drive - the motor is mounted directly on the shaft of the spiral
- Unlimited number of starts/stops
- Shutdown instead of running idle to save energy; the compressor does not have an unloaded state
- High-efficiency frequency converters with the latest Vector control technology
- Smooth, soft start; the starting current is always lower than during full load
- Dimensioned for continuous 24/7 operation
- Stable constant pressure
- The automatic coolant temperature control prevents the accumulation of water condensate
- Coolers enlarged by 30%
- Latest generation of microprocessor control with remote access capability

Model	Power consumption kW	Capacity m ³ /min	Pressure bar g	Dimensions mm (LxWxH)	Weight kg	Pipe connection
ZS- 22PM-7	22	1,27-3,7	7	1200x800x1100	450	R1
ZS- 22PM-8		1,17-3,6	8			
ZS- 22PM-10		1,07-3,5	10			
ZS- 30PM-7	30	1,80-5,2	7	1200x800x1100	510	R1
ZS- 30PM-8		1,7-5,0	8			
ZS- 37PM-7	37	2,13-6,5	7	1300x900x1270	680	R1 1/2
ZS- 37PM-8		2,03-6,3	8			
ZS- 37PM-10		1,9-5,8	10			
ZS- 45PM-7	45	2,6-8,1	7	1300x950x1370	730	R1 1/2
ZS- 45PM-8		2,47-8	8			
ZS- 45PM-10		2,23-7,1	10			
ZS- 55PM-7	55	3,4-10,4	7	1800x1200x1550	1230	Rc 2
ZS- 55PM-8		3,27-10,1	8			
ZS- 55PM-10		2,9-8,7	10			
ZS- 75PM-7	75	4,53-13,6	7	1800x1200x1550	1280	Rc 2
ZS- 75PM-8		4,33-13,3	8			
ZS- 75PM-10		3,87-11,8	10			
ZS- 90PM-7	90	5,43-16,5	7	2000x1620x1692	2850	DN65
ZS- 90PM-8		5,30-16	8			
ZS- 90PM-10		4,83-14,5	10			
ZS- 90PM-12,5		1,6-12,8	12,5			
ZS- 110PM-7	110	6,77-20,3	7	2000x1620x1692	2900	DN65
ZS- 110PM-8		6,33-20	8			
ZS- 110PM-10		5,67-17,5	10			
ZS- 110PM-12,5		5,46-15,6	12,5			
ZS- 132PM-7	132	8-24,5	7	2700x1750x1850	3600	DN65
ZS- 132PM-8		7,67-24	8			
ZS- 132PM-10		6,83-21	10			
ZS- 132PM-12,5		6,41-18	12,5			

Zephyr DV compressors

DV-series Zephyr compressors are equipped with variable speed drive technology that enables their maximum utilization with a high level of effectiveness. They are equipped with an asynchronous motor that flexibly responds to the current consumption of compressed air. DV-series compressors offer maximum power savings, which are ensured by a frequency converter. They do not run unloaded, but instead, the compressor shuts down.



Advantages of Zephyr DV compressors

- Shutdown instead of running idle to save energy; the compressor does not have an unloaded state
- High-efficiency asynchronous motors with efficiency classes IE3 and IE4
- High-efficiency frequency converters with the latest Vector control technology
- Smooth, soft start; the starting current is always lower than during full load
- Direct drive - the motor is connected directly to the rotor of the spiral
- Dimensioned for continuous 24/7 operation
- Stable constant pressure
- The automatic coolant temperature control prevents the accumulation of water condensate
- Coolers enlarged by 30%
- Latest generation of microprocessor control with a remote access capability

Model	Power consumption kW	Capacity m ³ /min	Pressure bar g	Dimensions mm (LxWxH)	Weight kg	Pipe connection
ZS-22-DV-7	22	1,27-3,7	7	1380×850×1160	610	Rc 1
ZS-22-DV-8		1,17-3,6	8			
ZS-22-DV-10		1,07-3,5	10			
ZS-30-DV-7	30	1,80-5,2	7	1600×1000×1360	840	Rc 1 1/2
ZS-30-DV-8		1,7-5,0	8			
ZS-37-DV-7	37	2,13-6,5	7	1600×1000×1360	860	Rc 1 1/2
ZS-37-DV-8		2,03-6,3	8			
ZS-37-DV-10		1,9-5,8	10			
ZS-45-DV-7	45	2,6-8,1	7	1850×1000×1360	950	Rc 1 1/2
ZS-45-DV-8		2,47-8	8			
ZS-45-DV-10		2,23-7,1	10			
ZS-55-DV-7	55	3,4-10,4	7	2200×1360×1755	1720	Rc 2
ZS-55-DV-8		3,27-10,1	8			
ZS-55-DV-10		2,9-8,7	10			
ZS-75-DV-7	75	4,53-13,6	7	2200×1360×1755	1900	Rc 2
ZS-75-DV-8		4,33-13,3	8			
ZS-75-DV-10		3,87-11,8	10			
ZS-75-DV-12,5		3,65-9,7	12,5			
ZS-90-DV-7	90	5,43-16,5	7	2900×1620×1692	2850	DN65
ZS-90-DV-8		5,30-16	8			
ZS-90-DV-10		4,83-14,5	10			
ZS-90-DV-12,5		1,6-12,8	12,5			
ZS-110-DV-7	110	6,77-20,3	7	2900×1620×1692	2900	DN65
ZS-110-DV-8		6,33-20	8			
ZS-110-DV-10		5,67-17,5	10			
ZS-110-DV-12,5		5,46-15,6	12,5			
ZS-132-DV-7	132	8-24,5	7	2700×1750×1850	3600	DN65
ZS-132-DV-8		7,67-24	8			
ZS-132-DV-10		6,83-21	10			
ZS-132-DV-12,5		6,41-18	12,5			
ZS-160-DV-7	160	8,7-29	7	2700×1750×1850	3700	DN65
ZS-160-DV-8		8,49-28,3	8			
ZS-160-DV-10		7,2-24	10			
ZS-160-DV-12,5		6,45-21,5	12,5			
ZS-185-DV-7	185	9,8-32,5	7	2700×1820×1850	3800	DN80
ZS-185-DV-8		9,5-31,6	8			
ZS-185-DV-10		8,5-28,3	10			
ZS-185-DV-12,5		7,4-24,5	12,5			
ZS-200-DV-7	200	10,5-35,1	7	2700×1820×1850	3800	DN80
ZS-200-DV-8		10,4-34,5	8			
ZS-200-DV-10		9,2-30,8	10			
ZS-200-DV-12,5		8,3-27,8	12,5			
ZS-220-DV-7	220	12,0-40	7	3000×2050×2097	5000	DN100
ZS-220-DV-8		11,8-39,3	8			
ZS-220-DV-10		10,2-34	10			
ZS-220-DV-12,5		8,6-28,5	12,5			
ZS-250-DV-7	250	13,2-44,1	7	3200×2050×2200	5500	DN100
ZS-250-DV-8		13,1-43,6	8			
ZS-250-DV-10		11,5-38,2	10			
ZS-250-DV-12,5		10,1-33,6	12,5			
ZS-280-DV-7	280	15,8-52,5	7	3200×2050×2200	5500	DN125
ZS-280-DV-8		15,0-50	8			
ZS-280-DV-10		13,0-43,2	10			
ZS-280-DV-12,5		11,6-38,6	12,5			

Zephyr D compressors

Fixed-speed D-series Zephyr compressors are the most reliable and energy-efficient solution for processes with a constant consumption of compressed air. Thanks to their unique design with fewer components, they are intended to meet the conditions of even the most demanding operations.



Advantages of Zephyr D compressors

- *High-efficiency asynchronous motors with efficiency classes IE3 and IE4*
- *Direct drive - the motor is connected directly to the rotor of the spiral*
- *Dimensioned for continuous 24/7 operation*
- *Stable constant pressure*
- *The automatic coolant temperature control prevents the accumulation of water condensate*
- *Coolers enlarged by 30%*
- *Latest generation of microprocessor control with remote access capability*



Model	Power consumption kW	Capacity m ³ /min	Pressure bar g	Dimensions mm (LxWxH)	Weight kg	Pipe connection
ZS-7,5-D-7	7,5	1,1	7	990×680×928	250	Rc 1/2
ZS-7,5-D-8		1	8			
ZS-15-D-7	15	2,4	7	1300×900×1100	530	Rc 1
ZS-15-D-8		2,3	8			
ZS-22-D-7	22	3,7	7	1380×850×1160	580	Rc 1
ZS-22-D-8		3,6	8			
ZS-22-D-10		3,5	10			
ZS-30-D-7	30	5,2	7	1600×1000×1360	840	Rc 1 1/2
ZS-30-D-8		5	8			
ZS-37-D-7	37	6,5	7	1600×1000×1360	860	Rc 1 1/2
ZS-37-D-8		6,3	8			
ZS-37-D-10		5,8	10			
ZS-45-D-7	45	8,1	7	1850×1000×1360	950	Rc 1 1/2
ZS-45-D-8		8	8			
ZS-45-D-10		7,1	10			
ZS-55-D-7	55	10,4	7	2150×1350×1500	1720	Rc 2
ZS-55-D-8		10,1	8			
ZS-55-D-10		8,5	10			
ZS-75-D-7	75	13,6	7	2150×1350×1500	1860	Rc 2
ZS-75-D-8		13,3	8			
ZS-75-D-10		11,8	10			
ZS-90-D-7	90	16,5	7	2460×1620×1692	2560	DN65
ZS-90-D-8		16	8			
ZS-90-D-10		14,5	10			
ZS-90-D-12,5		12,5	12,5			
ZS-110-D-7	110	20,3	7	2460×1620×1692	2650	DN65
ZS-110-D-8		20	8			
ZS-110-D-10		17,5	10			
ZS-110-D-12,5		15,6	12,5			
ZS-132-D-7	132	24,5	7	2700×1750×1850	3100	DN65
ZS-132-D-8		24	8			
ZS-132-D-10		21	10			
ZS-132-D-12,5		18	12,5			
ZS-160-D-7	160	29	7	2700×1750×1850	3200	DN65
ZS-160-D-8		28,3	8			
ZS-160-D-10		24	10			
ZS-160-D-12,5		21,5	12,5			
ZS-185-D-7	185	32,5	7	2700×1820×1850	3450	DN80
ZS-185-D-8		31,6	8			
ZS-185-D-10		28,3	10			
ZS-185-D-12,5		24,5	12,5			
ZS-200-D-7	200	35,1	7	2700×1820×1850	3640	DN80
ZS-200-D-8		34,5	8			
ZS-200-D-10		30,8	10			
ZS-200-D-12,5		27,8	12,5			
ZS-220-D-7	220	40	7	3000×2050×2097	4800	DN100
ZS-220-D-8		39,3	8			
ZS-220-D-10		34	10			
ZS-220-D-12,5		28,5	12,5			
ZS-250-D-7	250	44,1	7	3460×2050×2200	6600	DN100
ZS-250-D-8		43,8	8			
ZS-250-D-10		38,2	10			
ZS-250-D-12,5		33,8	12,5			
ZS-280-D-7	280	52,5	7	3460×2050×2200	6600	DN100
ZS-280-D-8		50	8			
ZS-280-D-10		43,2	10			
ZS-280-D-12,5		38,6	12,5			
ZS-315-D-7	315	60,1	7	3460×2050×2100	7900	DN100
ZS-315-D-8		56	8			
ZS-315-D-10		50	10			
ZS-315-D-12,5		43,2	12,5			
ZS-355-D-7	355	66	7	4000×2200×2300	8100	DN125
ZS-355-D-8		65	8			
ZS-355-D-10		55	10			
ZS-355-D-12,5		48	12,5			
ZS-400-D-7	400	74	7	4000×2200×2300	8300	DN125
ZS-400-D-8		73	8			
ZS-400-D-10		61	10			
ZS-400-D-12,5		53	12,5			

Two-stage Zephyr D-2S screw compressors

Thanks to their unique two-stage spiral, the two-stage Zephyr D-2S screw compressors achieve top efficiency. The screw blocks are designed to minimize wear on bearings. Compared to conventional concepts, the electricity costs are up to 15% lower and the service life of the screw blocks is almost double due to the distribution of work.



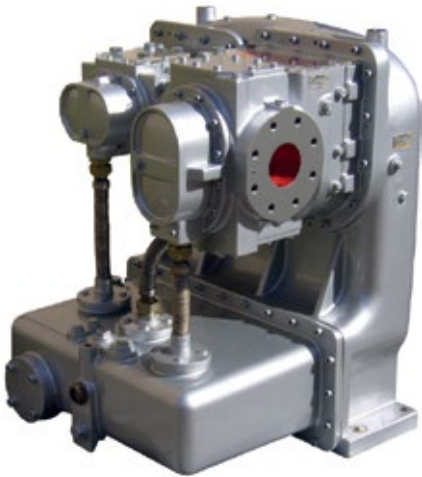
Advantages of Zephyr D-2S compressors

- High-efficiency two-stage spiral with performance up to 15% higher than that of standard single-stage compression
- High-efficiency asynchronous motors with efficiency classes IE3 and IE4
- Direct drive - the motor is connected directly to the rotor of the spiral
- Dimensioned for continuous 24/7 operation
- Stable constant pressure
- The automatic coolant temperature control prevents the accumulation of water condensate
- Coolers enlarged by 30%
- Latest generation of microprocessor control with remote access capability

Model	Power consumption kW	Capacity m ³ /min	Pressure bar g	Dimensions mm (LxWxH)	Weight kg	Pipe connection
ZS-90-D-7	90	21	7	2800×1750×1700	3200	DN65
ZS-90-D-8		20	8			
ZS-90-D-10		17,5	10			
ZS-90-D-12,5		14	12,5			
ZS-110-D-7	110	25	7	2800×1750×1700	3500	DN65
ZS-110-D-8		24	8			
ZS-110-D-10		20	10			
ZS-110-D-12,5		17	12,5			
ZS-132-D-7	132	30	7	3400×2100×2000	4700	DN80
ZS-132-D-8		29,5	8			
ZS-132-D-10		24	10			
ZS-132-D-12,5		20	12,5			
ZS-160-D-7	160	35	7	3400×2100×2000	4900	DN80
ZS-160-D-8		34,5	8			
ZS-160-D-10		29	10			
ZS-160-D-12,5		24	12,5			
ZS-185-D-7	185	43	7	3400×2200×2100	5800	DN100
ZS-185-D-8		42	8			
ZS-185-D-10		34	10			
ZS-185-D-12,5		30	12,5			
ZS-200-D-7	200	45	7	3400×2200×2100	6000	DN100
ZS-200-D-8		44	8			
ZS-200-D-10		39	10			
ZS-200-D-12,5		33	12,5			
ZS-220-D-7	220	48,5	7	3400×2200×2100	6600	DN100
ZS-220-D-8		48	8			
ZS-220-D-10		42	10			
ZS-220-D-12,5		38	12,5			
ZS-250-D-7	250	55	7	4000×2150×2400	7000	DN100
ZS-250-D-8		54	8			
ZS-250-D-10		48	10			
ZS-250-D-12,5		41	12,5			
ZS-280-D-7	280	62	7	4000×2150×2400	7400	DN125
ZS-280-D-8		61	8			
ZS-280-D-10		53	10			
ZS-280-D-12,5		46	12,5			
ZS-315-D-7	315	68	7	4000×2200×2300	7900	DN125
ZS-315-D-8		67	8			
ZS-315-D-10		61	10			
ZS-315-D-12,5		51	12,5			

OF-series Zephyr oil-free screw compressors

OF-series Zephyr oil-free screw compressors ensure the supply of the highest-quality air without oil admixtures that meets the class 0 parameters of ISO 8573-1. In the case of oil-free compressors, airtightness between the rotors is the most important thing. This airtightness is ensured by the highest precision machining class and the special UltraCoat coating, which provides greater abrasion resistance and performance 10% higher than Teflon coatings. The OF-series compressors are designed for the most demanding applications in the chemical, food and pharmaceutical industries or research laboratories.



Advantages of Zephyr OF compressors

- High-efficiency, two-stage, oil-free GHH spirals with the patented UltraCoat coating
- Class 0 certification of ISO 8573-1
- Performance 10% higher than Teflon coatings
- Variants with a frequency converter or with loaded/unloaded control
- Very low noise
- Dimensioned for continuous 24/7 operation
- Stable constant pressure
- The automatic coolant temperature control prevents the accumulation of water condensate
- Coolers enlarged by 30%
- Latest generation of microprocessor control with remote access capability

Model	Power consumption kW	Capacity m ³ /min	Pressure bar g	Dimensions mm (LxWxH)	Weight kg	Pipe connection
ZS-37-OFV-7	37	6,3	7	2380x1250x1980	2500	DN50
ZS-37-OFV-8		5,5	8			
ZS-37-OFV-10		4,2	10			
ZS-45-OFV-7	45	7,6	7	2380x1580x1880	2700	DN50
ZS-45-OFV-8		6,6	8			
ZS-45-OFV-10		5,2	10			
ZS-55-OFV-7	55	9,6	7	2380x1580x1880	2750	DN50
ZS-55-OFV-8		8,8	8			
ZS-55-OFV-10		7,7	10			
ZS-75-OFV-7	75	12,5	7	2380x1580x1880	2800	DN50
ZS-75-OFV-8		11,8	8			
ZS-75-OFV-10		10,7	10			
ZS-90-OFV-7	90	16	7	2880x1880x1880	3400	DN65
ZS-90-OFV-8		13,6	8			
ZS-90-OFV-10		13	10			
ZS-110-OFV-7	110	19,5	7	2880x1880x1880	3500	DN65
ZS-110-OFV-8		18,2	8			
ZS-110-OFV-10		17,5	10			
ZS-132-OFV-7	132	23	7	2880x1880x1880	3600	DN65
ZS-132-OFV-8		22	8			
ZS-132-OFV-10		19,5	10			
ZS-160-OFV-7	160	26	7	2880x1880x1880	3650	DN65
ZS-160-OFV-8		25	8			
ZS-160-OFV-10		23,5	10			
ZS-220-OFV-7	220	39	7	3350x2280x2080	5000	DN100
ZS-220-OFV-8		36	8			
ZS-220-OFV-10		32	10			
ZS-250-OFV-7	250	45	7	3350x2280x2080	5200	DN100
ZS-250-OFV-8		43	8			
ZS-250-OFV-10		38	10			
ZS-280-OFV-7	280	48,5	7	3350x2280x2080	5500	DN100
ZS-280-OFV-8		48	8			
ZS-280-OFV-10		41	10			

Zephyr S oil-free spiral compressors

S-Series Zephyr oil-free spiral compressors ensure the maximum purity of compressed air without oil admixtures that meets the strictest parameters. They are designed in particular for demanding applications in the chemical, food and pharmaceutical industries or research laboratories.



Advantages of Zephyr S compressors

- *High-efficiency IWATA spiral blocks*
- *Very low noise*
- *Dimensioned for continuous 24/7 operation*
- *Stable constant pressure*
- *The automatic coolant temperature control prevents the accumulation of water condensate*
- *Coolers enlarged by 30%*
- *Latest generation of microprocessor control with remote access capability*

Model	Power consumption kW	Capacity m ³ /min	Pressure bar g	Dimensions mm (LxWxH)	Weight kg	Pipe connection
ZS-4-S-8	4	0,4	8	1100×650×980	230	Rc 3/4
ZS-4-S-10		0,3	10			
ZS-7,5-S-8	7,5	0,8	8	1200×650×1600	320	Rc 1
ZS-7,5-S-10		0,7	10			
ZS-11-S-8	11	1,2	8	1350×1200×800	450	Rc 1
ZS-11-S-10		1	10			
ZS-15-S-8	15	1,6	8	800×1200×1800	650	Rc 1
ZS-15-S-10		1,4	10			
ZS-22-S-8	22	2,6	8	1200×1400×1500	900	Rc 1
ZS-22-S-10		2,1	10			
ZS-30-S-8	30	3,5	8	1200×1400×1800	1300	Rc 1
ZS-30-S-10		2,8	10			

More Zephyr products

Zephyr compressed air treatment

Compressed air freeze dryers

Energy-efficient and environmentally friendly compressed air dryers for the most demanding operating conditions

HOC dryers

The most efficient adsorption dryers; utilizing waste heat from compressors

Heat regenerated adsorption dryers

Tower adsorption dryers with a vacuum pump, providing efficient operation without the use of compressed air for regeneration

Cold regenerated adsorption dryers

Adsorption tower dryers; no electricity consumption

Compressed air filtration

Compressed air filters for the separation of solid particles, oil and oil vapours

Control systems and waste heat utilization for the reduction of CO₂ emissions

HiVision® Air control system

A system for the continuous online monitoring of the environment and compressor operating data

Recovery systems for Zephyr compressors

Systems for utilizing compression heat for temperature control in adjacent rooms, DHW heating or other applications

Zephyr water and oil filtration

Water filters with automatic purification

Filters for applications where the temperature of the liquid reaches up to 60 °C

Oil filters with automatic purification

Filters for the most demanding applications with a liquid temperature of up to 120 °C





IDEAL-Trade Service, spol. s r.o., Králova 4, 616 00 Brno, Czech Republic

tel.: +420 541 422 611

e-mail: kompresory@itsbrno.cz

www.itsbrno.cz